

3-3-2018

Surgical treatment of end stage heart failure: mechanical circulatory support and cardiac transplantation

Francis X. Downey

Aurora Health Care, frank.downey@aurora.org

Follow this and additional works at: <https://digitalrepository.aurorahealthcare.org/hrtfailurefaculty>

Recommended Citation

Downey F. Surgical treatment of end stage heart failure: mechanical circulatory support and cardiac transplantation. Presentation at New Developments in Cardiology; March 3, 2018; Milwaukee, WI.

This Oral/Podium Presentation is brought to you for free and open access by the Aurora UW Faculty at Aurora Health Care Digital Repository. It has been accepted for inclusion in Aurora UW Heart Failure Faculty by an authorized administrator of Aurora Health Care Digital Repository. For more information, please contact ewindchy@bepress.com.



27th Annual New Developments in Cardiology

A Comprehensive Review of Cardiology
and Vascular Medicine Issues

**Saturday,
March 3, 2018**

Milwaukee Marriott Downtown
Milwaukee, Wisconsin

Course directors:
Tanvir Bajwa, MD
Suhail Allaqaband, MD
Jayant Khitha, MD

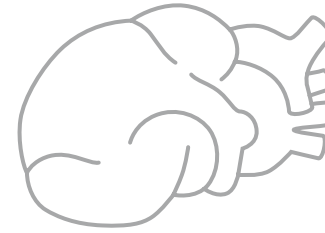


*This activity is sponsored
by Aurora Health Care*

KV0683 (1/18)

**Saturday,
March 3, 2018**
Milwaukee Marriott Downtown
323 East Wisconsin Avenue
Milwaukee, WI 53202

**27th Annual
New Developments
in Cardiology**
A comprehensive review of cardiology
and vascular medicine issues



Aurora Health Care
Aurora Sinai Medical Center, Inc.
Attn: Laurel Landis
945 N. 12th Street
Milwaukee, WI 53233

NONPROFIT ORG
US POSTAGE
PAID
MILWAUKEE WI
PERMIT NO. 5590

General Information

New Developments in Cardiology | **Saturday, March 3, 2018**

Location

Milwaukee Marriott Downtown
323 E. Wisconsin Avenue | Milwaukee WI 53202

Conference Fees* (Check appropriate category)

Physician/DO/PhD/PharmD/Industry	\$130.00
Aurora Physician/DO/PhD/PharmD	\$85.00
Allied Staff/NP/RN/MA	\$30.00
Student/Retired Discounted fee	\$25.00

*Conference fees cover tuition, materials, breaks and lunch as well as a \$25.00 non-refundable registration fee. Participants may cancel up to 72 hours in advance of the symposium to receive a refund (less the \$25). No refunds will be made after that time.

Conference Attire

To ensure your comfort in the conference room, please bring a sweater or jacket to accommodate temperature variations.

Information about the course

Contact Laurel Landis at 414-219-7684 or email to laurel.landis@aurora.org with course related questions.

Refunds

Course fees include a \$25 nonrefundable registration fee. Should you cancel up to 72 hours prior to the symposium, all but the \$25 registration fee will be refunded. Refunds will not be given after that time.

Purpose

This course is designed to present new developments in the field of cardiovascular disorders, as well as their clinical applications, in order to encourage discussion and promote improved patient outcomes in all our practices.

We have chosen topics and presenters to cover the latest in familiar topics as well as map out areas of frontier exploration.

Objectives

At the end of this course, participants will be able to:

1. List the latest treatments in 5 most common vascular problems
2. Interpret the indications for action in treating
3. Compare new treatments in Cardiovascular disease

Target Audience

This symposium is designed for family practitioners, internists, cardiologists and emergency department physicians who diagnose, treat and manage patients with cardiovascular disorders. It will also be of interest to fellows, residents, PAs, MAs and other allied health professionals interested in cardiovascular disease.

Elements of Competence

This CME activity has been designed to change medical knowledge and patient care, two of the six competencies embraced by the American Board of Medical Specialties.

CREDIT

Accreditation

Aurora Health Care is accredited by the Wisconsin Medical Society to provide continuing medical education for physicians.

Aurora Health Care designates this live educational activity for a maximum of 6.75 *AMA PRA Category 1 credit(s)*[™]. Physicians should claim only the credit commensurate with the extent of their participation in the activity.

For a complete listing of Aurora Health Care CME programs visit our website at Aurora.org/CMEActivities.

Aurora Health Care subscribes to the articles of Title III of the Americans with Disabilities Act of 1990. Should you or anyone accompanying you require special assistance, please notify us at 414-219-7684.

Disclosure of Conflicts of Interest

It is the policy of the Aurora Health Care Office of Continuing Education to ensure balance, independence, objectivity and scientific rigor in all of its sponsored education activities. All participating faculty, course directors and planning committee members are required to disclose to the program audience any financial relationships related to the subject matter of this program. Disclosure information along with the presentations are peer reviewed in advance in order to manage and resolve any possible conflicts of interest. All faculty and planning committee members have attested that their financial relationships do not affect their ability to present well-balanced, evidence-based content for this activity. Specific disclosure information for each course faculty will be shared with the audience prior to the faculty's presentation.

Commercial funding pending and will be announced at the time of the course.

Agenda

8:00 a.m.	Welcome and Introduction	11:50 a.m.	Question & Answers
8:05 a.m.	Surgical Treatment of End Stage Heart Failure: Mechanical Circulatory Support and Cardiac Transplantation Frank Downey, MD	12:05 p.m.	Lunch
8:35 a.m.	Atrial Fibrillation: Treatment Options in 2018 Jasbir Sra, MD	1:20 p.m.	The Role of Cardiac MRI in Contemporary Practice Patrycja Z. Galazka, MD
9:05 a.m.	Mitral Valve Regurgitation and Update on TAVR Epidemiology, Presentation, Diagnosis, Evolution of Treatment From Medical Therapy to Percutaneous Repair/Replacement Tanvir Bajwa, MD	1:50 p.m.	Hot issues in Anti-platelet therapy 2018: What's the data to guide drug selection, duration, and combinations? Anthony DeFranco, MD
9:35 a.m.	PFO Closure – the Glaring Evidence for a Cryptogenic Problem Putting the Evidence Together, Update on the Treatment Guidelines Suhail Allaqaband, MD	2:20 p.m.	Peripheral Vascular Disease: A Comprehensive Approach to Claudication, Acute and Chronic Limb Ischemia With Updates on Guideline Based Therapy Louie Kostopoulos, MD
10:05 a.m.	Break and Exhibits	2:50 p.m.	Thoracic Aortic Dissection Epidemiology, Clinical Presentation, Diagnosis and Updates on Treatment Options Jayant Khitha, MD
10:20 a.m.	Heart Failure with Preserved Left Ventricular Function (HFpEF) Prevalence, Clinical Presentation, Diagnosis, Treatment, Prognosis Nasir Z. Sulemanjee, MD	3:20 p.m.	Pulmonary Embolism Response Team: A New Paradigm for the Multidisciplinary Evaluation and Treatment of Patients with Pulmonary Embolus Ramagopal Tumuluri, MD
10:50 a.m.	Dyslipidemia – Update on the Treatment Option in Different Patient Populations: Statin Myths and Controversies, Role of PCSK9 Inhibitors in Contemporary Practice V. Shrinivas Murthy, MD	3:50 p.m.	A Case Based Approach to Patients Presenting with STEMI and NSTEMI with Emphasis on Guideline Directed Therapy Fuad Jan, MD
11:20 a.m.	Smoking Cessation: An Evidence-Based 2018 Update Michael Fiore, MD	4:20 p.m.	Adjourn

Course Directors and Faculty

Course Directors

Tanvir Bajwa, MD, FACC, FSCAI – Clinical Adjunct Professor of Medicine*, Associate Head, Cardiovascular Disease Section, Director, Cardiac Catheterization Laboratory, Director, Interventional Fellowship Program; Aurora Health Care, Milwaukee, WI.

Jayant Khitha, MD – Interventionalist, Cardiac, Vascular & Endovascular; Associate Program Director, Cardiovascular Disease Fellowship; Aurora Health Care, Milwaukee, WI.

Suhail Allaqaband, MD, FACC, FACAI, FCCP – Clinical Adjunct Professor of Medicine*, Program Director, Cardiology Fellowship Program, Director Cardiac Catheterization Laboratory; Aurora Health Care, Milwaukee, WI.

Faculty

Anthony DeFranco, MD – Clinical Adjunct Associate Professor of Medicine;* Interventional, General, and Preventive Cardiology; Aurora Health Care, Milwaukee, WI.

Frank Downey, MD – Director of Mechanical Circulatory Support and Cardiac Transplantation; Aurora Health Care, Milwaukee, WI.

Michael Fiore, MD, MPH, MBA – Professor of Medicine; Director, University of Wisconsin Center for Tobacco Research Intervention, Madison, WI.

Patrycja Z. Galazka, MD – Non Invasive Cardiologist, Cardiovascular Imaging, Aurora Health Care, Milwaukee, WI.

Fuad Jan, MD, MBBS, FACC – Interventional Cardiologist; Aurora Health Care, Milwaukee, WI.

Louie Kostopoulos, MD, FACC – Interventional Cardiologist; Aurora Health Care, Milwaukee, WI.

V. Shrinivas Murthy, MD, PhD – Clinical Adjunct Professor of Medicine*, Aurora Health Care, Milwaukee, WI.

Jasbir Sra, MD FACC, FHRS – Clinical Adjunct Professor of Medicine*, Director, Electrophysiology, Aurora Cardiovascular Services, Director, Electrophysiology Research Laboratory, Aurora Sinai Medical Center, Associate Program Director, Clinical Cardiac, Electrophysiology Fellowship; Aurora Health Care, Milwaukee, WI.

Nasir Z. Sulemanjee, MD, FACC, FHFSa – Clinical Adjunct Professor of Medicine*, Program Director, Advanced Heart Failure Fellowship, Aurora Health Care, Milwaukee, WI.

Ramagopal Tumuluri, MD – Clinical Adjunct Associate Professor of Medicine;* Interventional Cardiologist; Aurora Health Care, Milwaukee, WI.

All physicians members of Aurora Cardiovascular Services, or Aurora Medical Group, Aurora St. Luke's and Sinai Medical Centers, Aurora Health Care, Milwaukee, WI.

** Clinical titles affiliated with the UW School of Medicine and Public Health.*

Speakers and topics subject to change without notice.

Course Registration

To ensure your comfort in the conference room, please bring a sweater or jacket to accommodate temperature variations.

Online Course Registration

New Continuous Professional Development Learning Platform!

The CPD Learning platform will allow you to take CME courses offered by Aurora and track your CME credits.

If this is your first time logging in, follow the steps below:

- Open your web browser and type in: <https://cpd.aurora.org>. This will take you to the **CPD Learning Platform** homepage.
 - **Aurora email login:** If you have an **Aurora.org** email click Aurora Login on green banner on top right.
 - If prompted enter your Aurora Health Care email and password. If you have logged in before you may automatically be logged in upon clicking on Aurora Login.
- **All other users:** On green banner on top right, click **Visitor Login** and enter your username and password.

*****NOTE:** For a new user, click on **Create Account** on the green banner on top right. Complete all required fields, and then click on **Create New Account** at the bottom of the page.

Your information will be stored and you will only have to access if you have any changes.

To find a course and register

- On the home page then click Courses across the top.
- You can filter or scroll through each course.
- Click on the course name to be directed to the course home page. Follow the directions to register on the course home page.

For registration related questions, please contact Aurora's Continuing Professional Development Office at cpddepartment@aurora.org or at 414-219-5490.

